

RouteFinder™

Dial-Up Router



Benefits

Shared Internet access for up to 253 users

Built-in 10/100 switch and Internet firewall services

Cost-effective Internet access

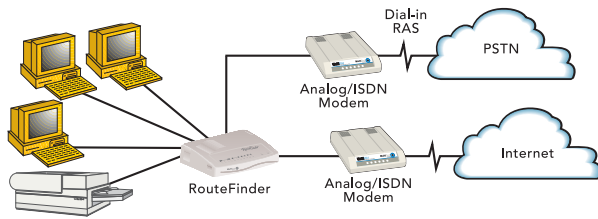
The Multi-Tech RouteFinder gives everyone on your network Internet access with just one modem and one ISP dial-up account. The RouteFinder features two RS-232 WAN ports so you can connect as many as two external analog modems or ISDN terminal adapters. Or, you can use one WAN port for dial-in remote access. The RouteFinder also has a built-in 10/100M bps switch to ensure high-speed transmission.

Features

- Shared Internet access for up to 253 LAN users over a modem connection and one IP address
- Two RS-232 WAN ports connect to analog or ISDN modems
- Built-in 4-port 10/100 switch
- WAN ports can also be used for dial-in remote access or LAN-to-LAN routing
- Load sharing distributes all available bandwidth between active users
- Built-in firewall and DHCP services with Network Address Translation (NAT)
- Protects your LAN against Denial of Service (DoS) attacks
- Internet access control tools provide client and site filtering
- Dial-on-demand for Internet services
- Supports outbound IPsec and PPTP pass through
- Network monitoring via Syslog allows network administrator to view all incoming and outgoing packets, status of connections and specific connection events
- IP address mapping/port forwarding
- Works with H.323 Voice over IP products including MultiVOIP gateways or Microsoft NetMeeting
- Remote configuration and management using any telnet client or Windows GUI
- Two-year warranty

*Shared V.90/
56K or ISDN
Internet Access
for Multiple
Users*

Highlights



Shared Internet Access. By connecting a RouteFinder to your Ethernet LAN, everyone on the network can be surfing the Internet simultaneously. Now your whole office or family network can benefit from e-mail and on-line information while sharing one modem, phone line and ISP account!

Reduce Internet Access Costs. Since users share one Internet account and one or two phone lines, you'll immediately realize lower monthly ISP and phone bills. You can even add new LAN users at no additional expense.

WAN Ports Offer Additional Functionality. The RouteFinder provides an additional RS-232 port that, when connected to another dial-up modem or ISDN terminal adapter, can serve to widen your bandwidth. The RouteFinder can utilize both RS-232 ports simultaneously, effectively doubling the bandwidths as high as 112K bps with V.90 or V.92 modems while surfing the web. Streaming types of data such as an ftp file transfer require the use of the ML-PPP protocol and will work when two analog modems are connected to the RouteFinder.

Built-in 10/100 Switch. The integrated 4-port 10/100 switch eliminates the need for an additional hub or switch to connect users not on a LAN. It ensures high-speed transmission and can serve as a completely dedicated full duplex backbone.

Network Security. The RouteFinder uses the NAT protocol to provide security from hackers without the extra cost of a firewall. It implements firewall and gateway security for LAN-based resources. Additionally, the RouteFinder supports Internet access restrictions by IP address, client protocols or a list of forbidden sites.

Virtual Server Support. In addition to providing shared Internet access, the RouteFinder can support a web, ftp or other Internet servers. Once configured, the RouteFinder only accepts unsolicited IP packets addressed to the web, ftp or other specified servers.

Specifications

LAN Ports

Number of Ports: 4
Interface: 10BaseT/100BaseTX, one can be used for uplink
Format: 802.3
Connection: RJ-45

WAN Ports

2 x RS-232 (V.24)
Connection: DB-9
DTE Speed: Up to 460K bps asynchronous

Protocols

Security: PAP, CHAP, NAT Firewall, RADIUS & Callback for remote access
Network: TCP/IP, DHCP, PPP, ML-PPP
Filtering: Protocol, port number & IP address

Processor

40 MHz 32 bit RISC

Memory

RAM: 2 MB
Flash ROM: 512K

Power

5 VDC, 2A

Physical Description

7.1" w x 4.9" h x 1.4" d; 13 oz.
(18.1 cm x 12.5 cm x 3.5 cm; 380 g)

Operating Environment

Temperature Range: 32 - 120°F (0-50°C)
Humidity Range: 25-85% noncondensing

Approvals

CE Mark
EMC: FCC Part 15 Class B; EN55022, EN55024
Safety: cUL, EN60950, UL60950

Ordering Information

Product	Description	Region
RF102S	Dual Serial Port Router	US/Can
RF102S-Euro	Dual Serial Port Router	Euro/ROW

Specify country when ordering.

Made in Mounds View, MN, U.S.A.

Trademarks: RouteFinder, Multi-Tech, & the Multi-Tech logo; Multi-Tech Systems, Inc. / All products or technologies are the trademarks or registered trademarks of their respective holders.

Easy Setup. With the RouteFinder, you don't need to be a networking expert to get it up and running. Simply connect the RouteFinder to the LAN, add your external modems and configure your ISP information.

World Headquarters

Tel: (763) 785-3500
(800) 328-9717
www.multitech.com

EMEA Headquarters

Multi-Tech Systems (EMEA)
United Kingdom
Tel: +(44) 118-959 7774

Multi-Tech Systems (EMEA)

France
Tel: +(33) 1 64 61 09 81