



# ADVISION

## SNMP NETWORK MANAGEMENT APPLICATION

### PRODUCT FEATURES

- Easy to use SNMP application with graphical user interface (GUI)
- Integrated into HP OpenView's UNIX platform
- Automatic device discovery
- Comprehensive trap and alarm processing
- Color coded device specific symbols indicate network status
- View, modify, save and apply device configuration
- Complete diagnostic control
- Detailed status information
- Performance graphs

ADTRAN's ADVISION is a comprehensive network management application that integrates into Hewlett Packard's OpenView® platform. ADVISION is the tool that helps control, configure, and monitor ADTRAN SNMP data communication products. With a few clicks of a mouse button, a network manager can reconfigure a WAN link or diagnose an entire network. Networks that include DDS, Switched 56, ISDN, Frame Relay, T1 and T3 are now easily controlled through a single management station. The easy to use graphical user interface (GUI) virtually eliminates costly training associated with other platforms.

ADVISION allows OpenView to automatically discover ADTRAN devices and place them into the appropriate submap with an ADTRAN specific symbol. ADVISION interprets traps received by OpenView, and sets the color of the symbol to the severity level of any error condition, allowing a network manager to quickly determine the status of a particular device. Should a device require configuration, the GUI provides access to configuration information which can be viewed and modified through a series of pull-down and pop-up menus. The device specific GUI displays animated graphical representations of devices, both front and rear views, assisting with field installations or diagnostics.

Activation of the application GUI only requires a simple point and click of a mouse. Once activated, a network manager has complete access to all features supported by the ADTRAN SNMP devices. System resources on the management platform are conserved by limiting use to that needed during active management.

ADVISION lets network managers interrogate networks, gathering information necessary to assess and assure performance. The GUI structure allows access to detailed status and performance information which is invaluable when evaluating overall network health. A wide range of device specific loopback and pattern tests are also available to assist in performance monitoring and to pinpoint trouble spots.

ADVISION is suited for both small and large networks where real time access to network status is mission critical. ADTRAN continues to offer complete network solutions with ADVISION and ADTRAN's SNMP products. ADVISION is your vision for ADTRAN networking products.

**CORPORATE OFFICE**

ADTRAN, Inc.  
901 Explorer Boulevard  
P.O. Box 140000  
Huntsville, AL 35814-4000

800 9ADTRAN  
256 963-8000  
fax: 256 963-8699  
fax back: 256 963-8200  
e-mail: info@adtran.com  
web site: www.adtran.com

**REGIONAL OFFICES**

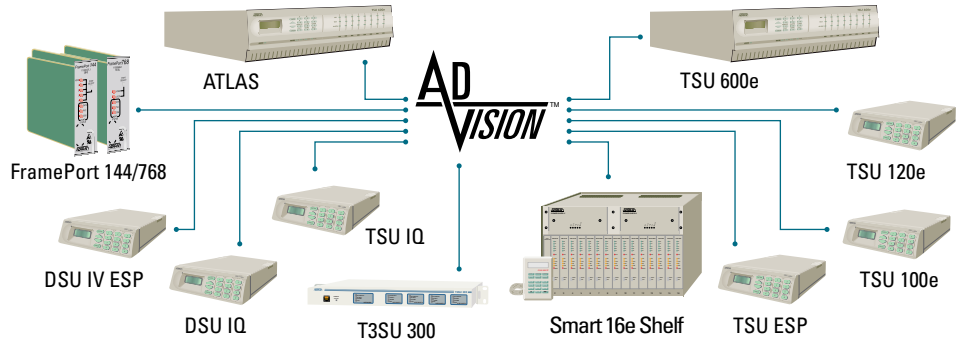
Chicago, IL 800 436-4217  
Seattle, WA 800 390-1573  
Washington, DC 800 794-9798

**FIELD OFFICES**

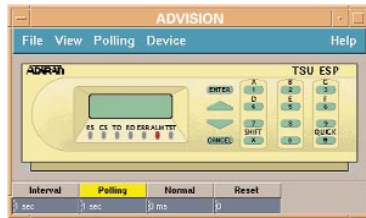
Atlanta, GA 800 289-0966  
Chicago, IL 800 471-8655  
Columbus, OH 888 865-2237  
Dallas, TX 800 471-8648  
Denver, CO 800 471-8651  
Irvine, CA 800 788-5408  
Kansas City, KS 800 471-8649  
Los Angeles, CA 888 223-7668  
Nashville, TN 888 223-7657  
New York, NY 800 471-8657  
Portland, OR 888 223-7660  
Richmond, VA 800 689-9915  
San Jose, CA 888 223-7655

**INTERNATIONAL CONTACTS**

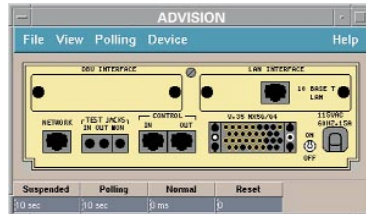
Asia Pacific/Australia  
852-2824-8283 (Hong Kong)  
Canada  
800 232-6811  
Caribbean/Latin America  
954 746-5355  
All other International inquiries  
256 963-2500



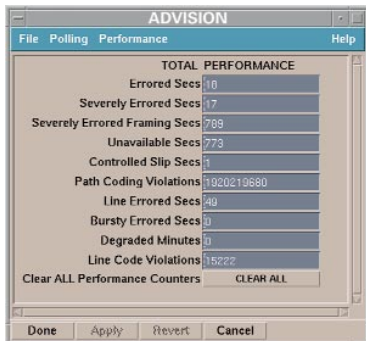
The OpenView submap for the DSU IV ESP. When HP OpenView discovers an ADTRAN SNMP device, ADVISION populates the submap with executable symbols for status reporting and GUI launching.



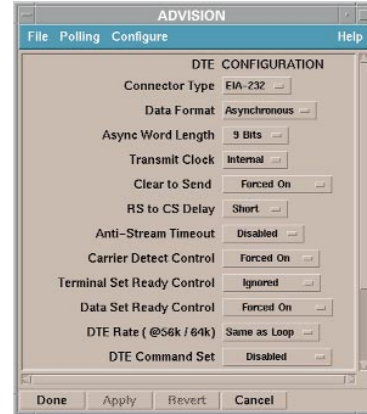
The TSU ESP front view. This view of the device front panel is animated with colored LEDs to reflect the current status of the device.



The TSU ESP rear panel. This rear view of the device shows what option cards are installed, and permits menu selections of the device or the option card.



DS1 Performance display. ADVISION provides access to performance information that can be stored and used to track historical performance of the network.



A DSU ESP configuration dialog. The specific device can be configured through a series of dialog boxes. Buttons provide multiple choice selections for ease of use.



DS1 Line Status. Through a series of status screens the current device status can be displayed for pinpointing network problems.

**System Requirements**

- HP 9000/700 with HP-UX 10.20
- Sun Sparc with Solaris 2.5.1
- HP OpenView Network Node Manager 4.11
- 256 color display
- CD drive

**Ordering Information**

EQUIPMENT	PART #
ADVISION.....	1950025L1

Specifications subject to change without notice.

OpenView is a registered trademark of Hewlett Packard Company  
ADVISION is a trademark of ADTRAN, Inc.



I.S. EN ISO 9001

ADTRAN is an ISO 9001 registered company.

