

TSU

T1-FT1 DSU/CSU



FEATURES

- **Single V.35 DTE interface**
- **Nx56 or Nx64 operation for data rates to 1.536 Mbps**
- **Auto and Manual D4(SF) or ESF framing support**
- **B8ZS or AMI line coding**
- **Easy-to-use front-panel keypad for unit configuration and monitoring**
- **Remote TSU configuration via FDL or 8k in-band**
- **Local and remote loopback capability**
- **Extensive built-in test capabilities**
- **Support for T-Watch PRO™ software for optional PC based configuration**
- **Standard 5-year warranty**

The ADTRAN TSU is a low cost, full-featured T1-FT1 Data Service Unit/Channel Service Unit (DSU/CSU). The TSU provides an interface between T1 or Fractional T1 service and the end user's Data Terminal Equipment (DTE) for applications such as LAN to LAN bridging, Frame Relay circuit termination and videoconferencing. The TSU provides access to traditional dedicated point-to-point T1 services as well as network termination for Frame Relay.

Housed in a rugged, metal housing, the TSU supports synchronous data rates from 56 kbps to 1.536 Mbps at Nx56 or Nx64 kbps. A single V.35 physical interface provides a connection to the end user's DTE equipment.

For configuration and testing, the TSU provides the capability to control a remote TSU through the T1 FDL channel. If the FDL channel is unavailable, the TSU can use 8 kbps of the data traffic to provide configuration and control of the remote unit. The in-band control channel is used on an as-needed basis and is automatically controlled by the TSU.

The TSU responds to standard local and remote loopback commands from the telephone company central office. In addition, the user has several built-in test capabilities, including V.54 remote loopback, 511, 1:8 and all 1's BERT patterns. Complete configuration and performance data is available from the front panel keypad and 2-line by 16-character LCD display. For additional configuration and monitoring options, the TSU supports a VT100 terminal configuration and control mode which is available through the control port. For direct serial connections, optional Windows®-based PC Management is available through the comprehensive, easy-to-use T-Watch PRO™ software package.

ADTRAN provides several T1 DSU/CSUs for a variety of customer applications. Additional products in the TSU family include the TSU LT, TSU ESP, TSU100, TSU120, TDU120 and the TSU600. These T1-FT1 DSU/CSUs offer flexibility, modularity, and end-user configuration.

CORPORATE OFFICE

901 Explorer Boulevard
P.O. Box 140000
Huntsville, Alabama 35814-4000

800 9ADTRAN
Local: 205 963-8000
Fax: 205 963-8699
Fax Back: 205 963-8200
http://www.adtran.com
email: info@adtran.com

CPE SALES LOCATIONS

Field Offices

Los Angeles, CA 800 390-1573
Washington, DC 800 471-8654
Chicago, IL 800 436-4217

Corporate Offices

San Jose, CA 888 223-7655
Irvine, CA 800 788-5408
Denver, CO 800 471-8651
Atlanta, GA 800 289-0966
Chicago, IL 800 471-8655
Kansas City, KS 800 471-8649
New York, NY 800 471-8657
Nashville, TN 888 223-7657
Dallas, TX 800 471-8648
Richmond, VA 800 689-9915
Canada 800 232-6811

Carrier Offices

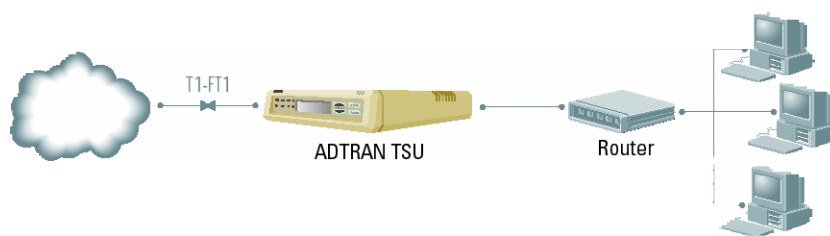
San Jose, CA 888 223-7655
Denver, CO 800 471-8651
Washington, DC 800 471-8654
Washington, DC 800 794-9798
Atlanta, GA 800 332-6945
Chicago, IL 800 805-6676
Dallas, TX 800 471-8648



ADTRAN is an ISO 9001
registered company.



Printed in U.S.A. on recycled paper
61200.060L2-8F November 1997
©ADTRAN, Inc. 1997



Product Specifications

Network Interface

- Line Rate: T1-FT1 (1.544 Mbps)

Physical Interface

- RJ48C: 8-Pin Modular

Framing

- SF/ESF
- Auto Detection

ESF Format

- AT&T 54016
- ANSI T1.403

Line Code

- AMI/B8ZS

Input Signal

- 0 to -36dB

DSO Assignment

- Contiguous
- Alternating

T1 Transmit Timing

- Loop-Timed
- Internal
- DTE

DTE Interface

- Bit Rate: 56 kbps to 1.536 Mbps, Nx56 or Nx64 kbps (N=1 to 24)

Electrical

- CCITT V.35

Mechanical

- V.35 (Winchester Type 34-pin)

Performance Monitor Performance Data

- BPVs/CRCs, ES, SES, UAS, % AS, % EFSEC, Alarms, Errors

Reports

- NI information stored for last 24 hours in 15-minute increments

PRMS

- ANSI Performance Report Messages (User selectable)

Tests

- Local: Payload/Line Loopback, DTE Loopback
- Remote: Payload/Line Loopback, V.54 (DTE) Loopback
- Network: CSU loopback

Built-In Test Patterns

- 511 (active DS0s) with error insert available
- 1:8 (all DS0s)
- All 1's (all DS0s)
- All 0's (all DS0s)

Agency Approvals

- FCC part 15, Class A, FCC Part 68, Industry Canada CS03, UL, CUL

Environment

- Operating: 0 to 50 °C (32 to 122 °F)
- Storage: -20 to 70 °C (-4 to 158 °F)
- Relative Humidity: Up to 95%, non-condensing

Physical

- Dimensions: 1.75" H, 10.125" D, 8.5" W
- Weight: 3 lbs.
- Power: 115VAC, 60Hz, 5W

Ordering Information

EQUIPMENT

- TSU

PART

1200060L2

Product Includes: 6 foot 8-pin to 8-pin modular cable, modular loopback plug & User Manual

Specifications subject to change without notice.

*T-Watch PRO is a trademark of ADTRAN, Inc.
Windows is a registered trademark of Microsoft Corporation*

